



# GMT MONTHLY MEMBERSHIP PROGRESS REPORT

Results as of: 5/31/2020

Multiple District 9

LOCATION: IOWA

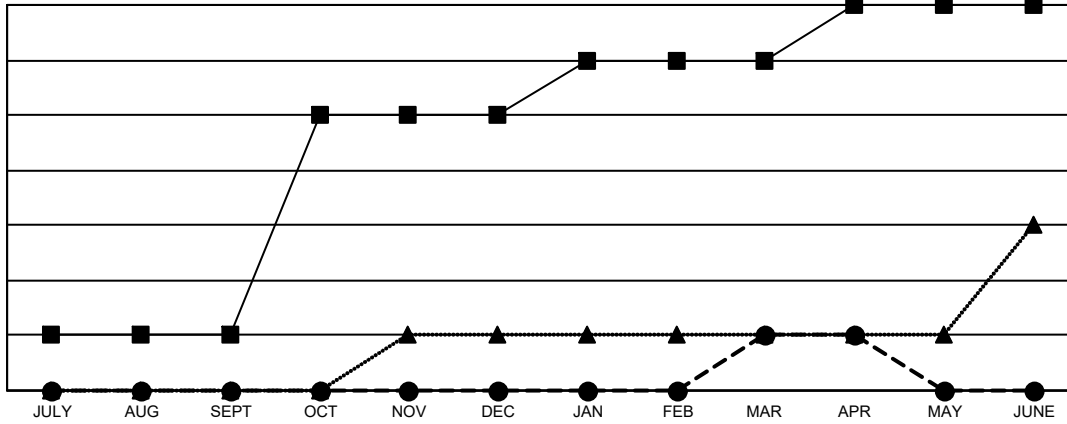
GMT: OPEN

GMT CA 1

Clubs			
RESULTS FOR 2019-2020			
QUARTER	NEW CLUB GOAL	NEW CLUBS	DROPPED CLUBS
JULY/AUG/SEPT	1	0	0
OCT/NOV/DEC	4	0	4
JAN/FEB/MAR	1	1	0
APR/MAY/JUNE	1	0	0

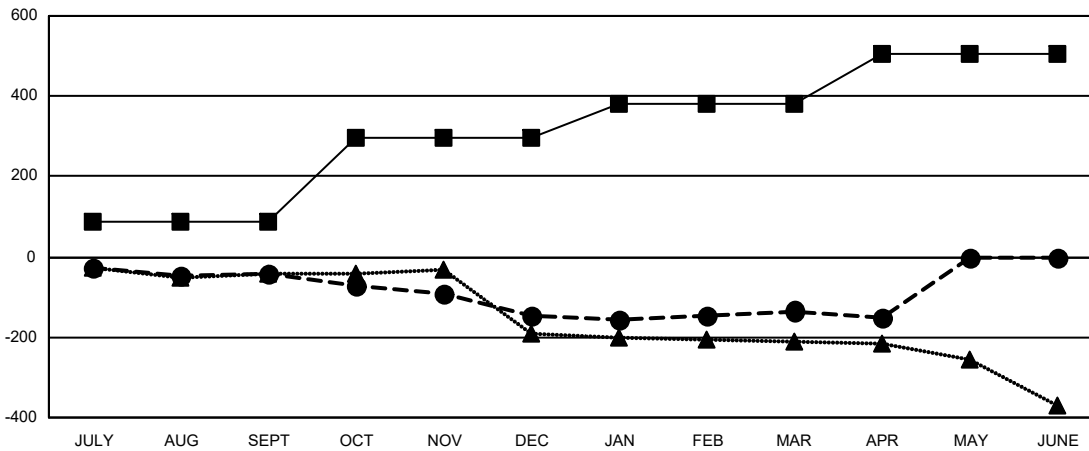
Members			
RESULTS FOR 2019-2020			
QUARTER	MEMBER GROWTH NET GOAL	MEMBER GROWTH ACTUAL	DROPPED MEMBERS ACTUAL (including transfers)
JULY/AUG/SEPT	89	125	151
OCT/NOV/DEC	208	151	249
JAN/FEB/MAR	83	173	155
APR/MAY/JUNE	124	6	18

GOALS AND ACTUAL NEW CLUBS CUMULATIVE



- - CURRENT YEAR GOALS FOR NEW CLUBS
- - CURRENT YEAR ACTUAL NEW CLUBS
- ▲ - LAST YEAR ACTUAL NEW CLUBS

GOALS AND ACTUAL MEMBERS CUMULATIVE



- - MEMBER GROWTH NET GOAL
- - MEMBER GROWTH ACTUAL
- ▲ - LAST YEAR MEMBERSHIP ACTUAL

DROPPED CLUBS: 4	
<b>DROPPED MEMBERS</b>	
DECEASED	86
CLUB CANCELLED	24
OTHER	461
<b>TOTAL</b>	<b>571</b>

155 CLUBS OF 312 ADDED 1 OR MORE NEW MEMBERS

GENDER DISTRIBUTION	
MALE	5,733 (73.22%)
FEMALE	2,097 (26.78%)

[CLICK HERE FOR CUMULATIVE MEMBERSHIP DATA](#)

TOTAL FAMILY UNIT MEMBERS	1,576
FAMILY MEMBERS PAYING HALF DUES	797